



Charted Raster

SeaZone Charted Raster is based on scanned and geocoded images of the well known Admiralty Chart series and is available for immediate use in GIS, CAD and similar applications without the need for additional software, add-ons or plug-ins, resulting in gains in time and performance.

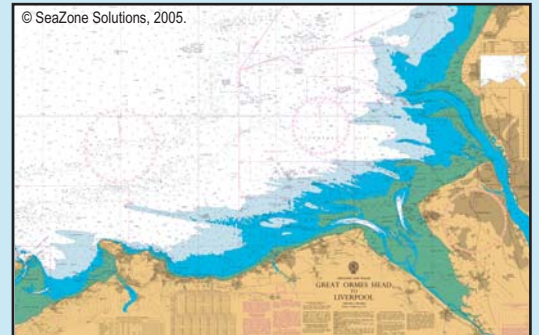
SeaZone Charted Raster data provides ideal backdrop mapping for a variety of applications on the desktop and Internet. The data can be combined with your own datasets to make the display and dissemination of maps within reports or over the Internet simple and effective.

Example uses of SeaZone Charted Raster within GIS or CAD include:

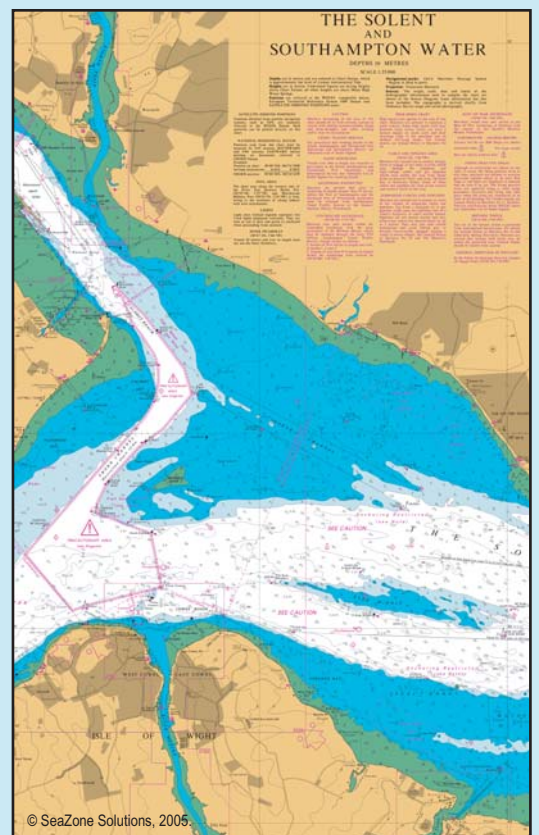
- presentation of a proposed offshore wind farm development within an environmental statement
- displaying survey or simulated environmental data in context with its surroundings
- demonstrating the area of potential impact of a spill or discharge plume
- survey planning and execution.

SeaZone Charted Raster is ideal for websites or Internet mapping applications. The data can be read directly by software that reads standard GeoTIFFs, without the need for additional software, add-ons or plug-ins. Example uses of SeaZone Charted Raster within a website include:

- incident or event recording via a familiar background or user interface
- contextual reporting of bird or sea mammal sightings, scientific observations and other measurements
- as a baseline map for Internet based asset or vessel tracking management applications.



Admiralty Chart No. 1978



Extract from Admiralty Chart No. 2036

SeaZone Raster can be combined with SeaZone Hydrospatial or other vector data sets to make a powerful and familiar looking, yet efficient, application both on the desktop and Internet. By overlaying vector data on a SeaZone Charted Raster backdrop users of the map or website immediately see the vector datasets in context.

Equally as powerful but more subtle, the vector data can be hidden behind the familiar looking SeaZone Raster interface to make the querying and reporting of geospatial information (e.g. water depth) held within the vector dataset quick and efficient.

Alternatively, SeaZone Charted Raster can be combined seamlessly with other vector datasets. In the example opposite the Charted Raster has been masked within the GIS, and displayed alongside OS MasterMap®.

SeaZone Raster is provided under licence which is renewed annually on subscription. Either annual or quarterly updates of the data are provided depending on user requirements. SeaZone Raster is available as standard GeoTiff with LZW compression. Other formats are available on request.

Coastal Raster

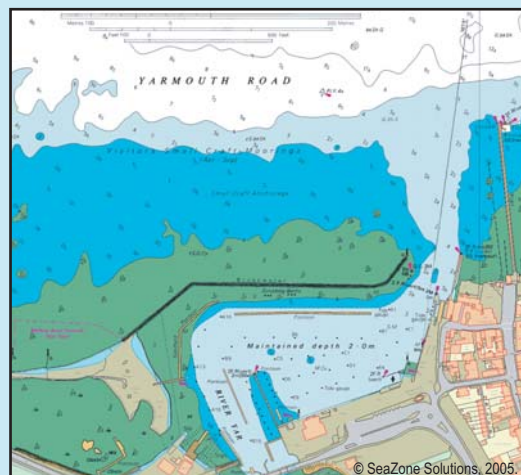
To meet the needs of users working in the economically important and environmentally sensitive coastal zone, SeaZone is able to combine its Charted Raster data with land mapping raster data to create SeaZone Coastal Raster, a complete mapping solution that is joined at the coast. The interoperable raster data is georeferenced to national co-ordinate systems and will be available as tiled images in GeoTIFF format or as a single image in ECW or MrSID format.

Accurate and continuous mapping for both land and sea areas is ideal for background mapping and overlaying other data layers in context within desktop GIS and on the Internet. The user is able to select from one or more scale bands from the range of land mapping available depending on the application. SeaZone will advise on the best marine map and vector coastline to use to join the two datasets and is able to help with formatting and installation issues.

SeaZone Solutions Limited
Tel: +44 (0) 870 013 0607
Fax: +44 (0) 870 013 0608
Email: info@SeaZone.com
Web: www.SeaZone.com



SeaZone charted raster



SeaZone Charted Raster masked in GIS with OS MasterMap®



SeaZone Coastal Raster combined with Ordnance Survey Raster at 1:50,000



SeaZone Solutions Limited is a company owned by Admiralty Holdings Limited, which is a company wholly owned by the Secretary of State for Defence and operated on his behalf by the United Kingdom Hydrographic Office (UKHO)



Creating a Sea-Change in Digital Mapping for the Marine Environment and Coastal Zone