



Temporal Viewer

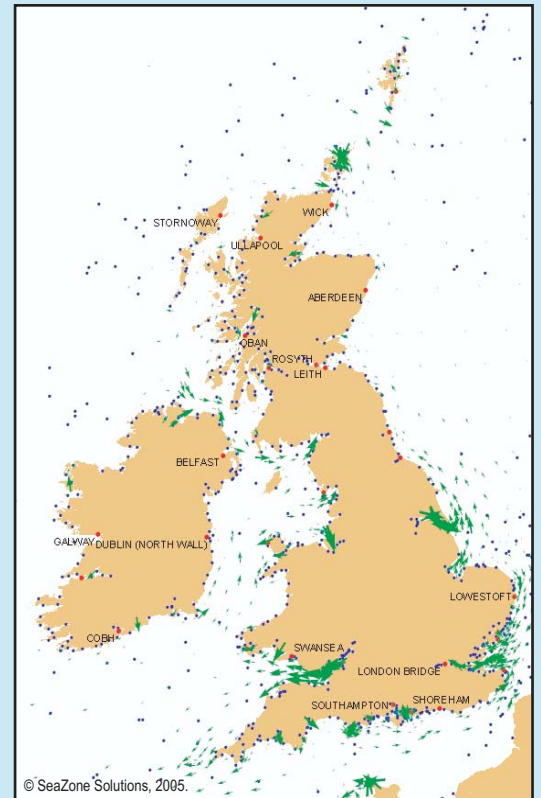
Display and Export Tides and Currents with SeaZone Temporal Viewer

For those involved in survey, operational planning, site selection and engineering within the marine environment, tidal information is crucial to the success of the activity or project and safety of personnel. Traditionally, this information is obtained from published tide tables and tidal atlases or electronically with restrictions on use. In the past, there has been no easy way by which tidal data can be incorporated into other information systems or combined with other data for comparison and spatial planning.

SeaZone Temporal Viewer solves all of these problems. It is available as a standalone application with a geographic display and as an extension to popular geographic information systems (GIS), such as Cadcorp SIS, MapInfo and ESRI ArcGIS.

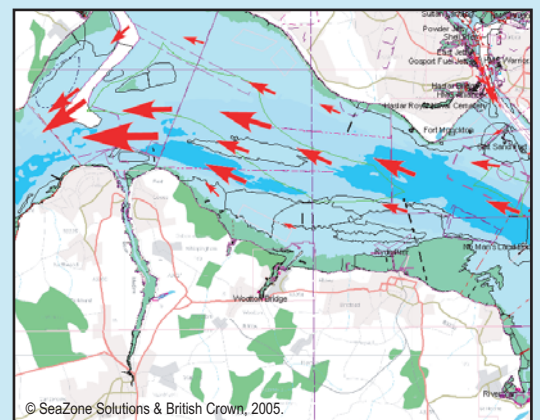
SeaZone Temporal Viewer includes the world standard in tidal prediction methodology from the UK Hydrographic Office to enable the user to predict and relate all kinds of marine information to the tide at any time in the past, present or future without exception. Export facilities enable tidal heights and currents to be exported to text files suitable for Microsoft Office and other applications for further display and analysis.

- Access essential tidal information quickly and easily
- Display tidal heights and currents in real time
- Combine tidal height and current data with other information
- Uses world standard Admiralty tidal prediction engine
- Add user defined data from tidal stations and current meters
- Export tidal heights and currents for use within other applications
- Display and manipulate modelled water levels and flows in GIS
- Display tide and current data in a geographical context
- Undertake complex spatial analysis with water levels and flows



© SeaZone Solutions, 2005.

SeaZone Temporal Viewer includes the Admiralty's Standard and Secondary Ports and Tidal Diamond databases. Tidal predictions correspond to those found in Admiralty Tide Tables.



© SeaZone Solutions & British Crown, 2005.

Solent tidal currents shown in real-time with SeaZone Hydrospatial inter-operable with Ordnance Survey mapping as a background.

Choose Your Source of Information

SeaZone Temporal Viewer includes the Admiralty's Standard and Secondary Ports and Tidal Diamond databases. In addition, other tidal station or current meter data can be added, as required, or the software can act as a powerful, integrated means by which output from hydrodynamic and other simulated environmental data systems can be displayed and manipulated.

By using SeaZone Temporal Viewer modelled water levels, currents and other parameters can be displayed and manipulated as themed layers and put into a geographic context. By using the analysis tools available in GIS, for the first time water levels and currents can be included in complex spatial analyses. If you need easy, flexible access to tide and current data, SeaZone Temporal Viewer is your only choice.

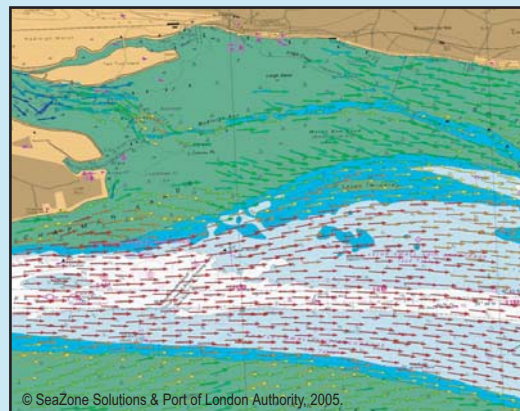
SeaZone Temporal Viewer is the entry level product from SeaZone's range of SeaZone Temporal software. The top level product is SeaZone Temporal Professional, a leading standard for the handling, presentation and analysis of complex, large volume oceanographic datasets such as those generated from ADCP/ADPs (Acoustic Doppler Profilers).

SeaZone Temporal Professional is based on many years of development activity by engineers and scientists involved in oceanographic and other survey work. A number of modules have been developed and tailored made to undertake the most common types of analysis quickly and easily.

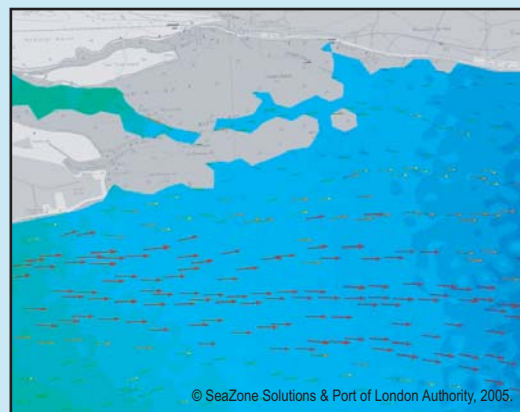
Customised versions of SeaZone's range of software are available for particular client requirements, such as integration with other information systems, including web delivery and as part of a complete instrument package.

For more information on how we can help you meet your development goals easily and cost effectively, please contact us.

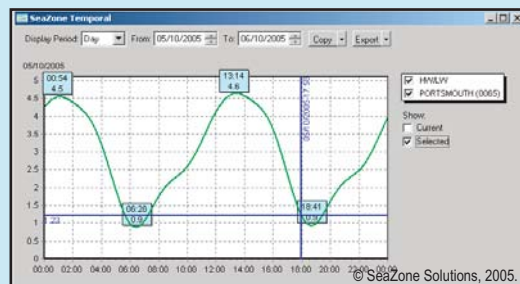
SeaZone Solutions Limited
Tel: +44 (0) 870 013 0607
Fax: +44 (0) 870 013 0608
Email: info@SeaZone.com
Web: www.SeaZone.com



Connect to model output to display the information in geographical context. SeaZone Temporal predicts tidal times and range, scaling modelled data accordingly.



SeaZone Temporal can access other data types held in the database, not just currents. Here, actual water depth from the model is shown. Values can be used as input to spatial analysis as themed layers using functions in GIS.



Predict and display tidal heights from the past, present or future.

SeaZone Solutions Limited is a company owned by Admiralty Holdings Limited, which is a company wholly owned by the Secretary of State for Defence and operated on his behalf by the United Kingdom Hydrographic Office (UKHO)



Creating a Sea-Change in Digital Mapping for the Marine Environment and Coastal Zone